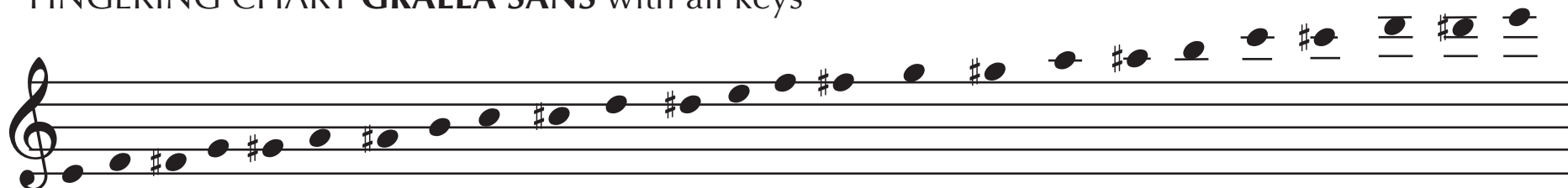
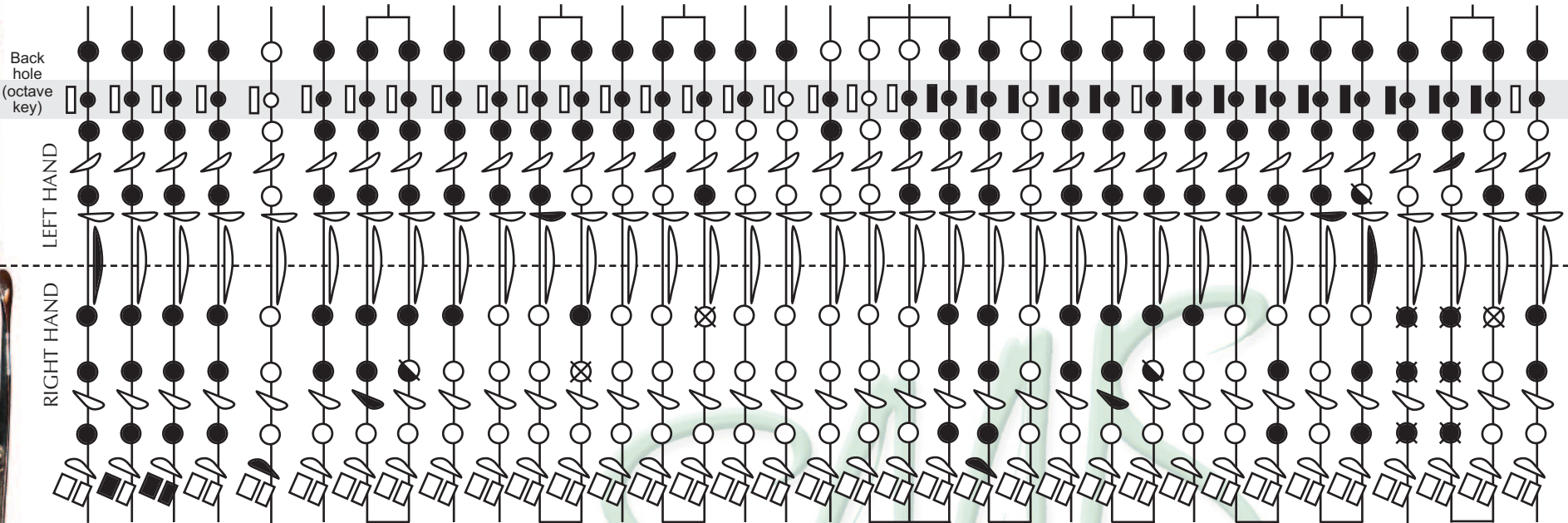


FINGERING CHART GRALLA SANS with all keys



E F F# G G# A A# B C C# D D# E F F# G G# A A# B C C# D D# E
 (Mi) (F) (FA#)(SOL)(SOL#)(LA) (LA#) (SI) (DO) (DO#) (RE) (RE#) (MI) (FA)(FA#) (SOL) (SOL#) (LA) (LA#) (SI) (DO) (DO#) (RE) (RE#) (MI)



Gralla SANS with **4 keys**: SOL#/FA#/FA/MI
 Gralla SANS with **5 keys**: LA#/SOL#/FA#/FA/MI
 Gralla SANS with **8 keys**: RE#/DO#/LA#/SOL#/FA#/FA/MI + octave key
 Note: The octave key can be mounted on every Gralla SANS



© Sans Luthier Distribució S.L.U. - Sta. Magdalena, 2 - 17854 St. Jaume de Llierca (Girona) - Tel. +34 972 28 70 95
 info@sansluthier.net · www.sansluthier.net

